

# LipoGen

Catalogue #: CT006  
 Storage: 4-8 °C  
 Packing Size: 1mL

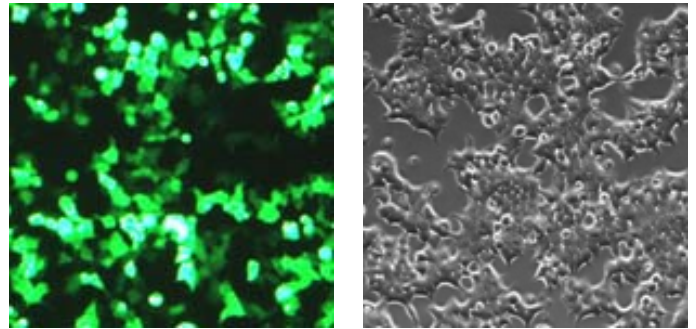
**Brief Description:** *LipoGen* transfection reagent is a combination of revolutionary technologies that enables transfection of eukaryotic cells with high efficiency and lower toxicity than most available transfection reagent on the market. *LipoGen* can be used for stable or transient transfection of cell lines, primary cultures with very large DNA constructs (up to 100 kb), oligonucleotides or nucleotides.

**Table 1.**

Cell culture device	24-well	12-well	6-well	35-mm	60-mm	100-mm
Medium vol. (mL)	0.5	1	2	3	5	10
Serum-free medium(μL)	50	100	200	300	500	1000
DNA(μg) up to	1	2	3	5	10	20
LipoGen (μL)	2	3	6	9	20	40

**Experimental Procedures:**

- Seed the cells 24 hours before transfection at 50-70% confluence.
- Prepare the *LipoGen*:DNA complex.
  - ✧ Dilute DNA with serum-free cell culture medium.
  - ✧ Add *LipoGen* by following the guideline given on Table (right).
  - ✧ Brief vortexing.
  - ✧ Incubate the complex for 10 minute at room temperature.
  - ✧ Add the complex evenly to the cell medium.
  - ✧ Change medium after 3 hour incubation (optional).
- Incubate cells 24 hours before analysis



**Figure 1.** Human embryonic kidney (HEK) 293T cells were transfected with pCMV-GFP with *LipoGen* reagent. Left: florescent; Right: phase. (x100).

**LIMITATION AND WARRANTY:**

This product is for research use only. Purchase of MacGene products does not grant rights to reproduce, modify, or repackage the products or any derivative thereof to third parties. MacGene biotech ltd. makes no warranty of any kind, expressed or implied; including merchantability or fitness for any particular purpose, except that the products sold will meet our specifications at the time of delivery. By acceptance of the product, Buyer indemnifies and holds MacGene biotech ltd. harmless against, and assumes all liability for, the consequence of its use or misuse by the Buyer, its employees or others, including, but not limited to, the cost of handling

**For resaech use only**